

## Instruction Manual

**E-SMART**  
Mini Clearomizer e-cig

No fire, **BestE cig**  
no tar,  
no carbon monoxide,  
no ash and no stub

Thank you for purchasing E-Smart e-cig.

Welcome to the beginning of a healthier lifestyle for you and the friends and family that share time with you. Please carefully review this manual before using the product so that you may enjoy this product properly and safely.

### I. Introduction

The E-Smart e-cig is nonflammable electronic atomizing device, it gives you the same feeling of a tobacco cigarette, but do not need any ignition. The E-Smart e-cig is marketed as a healthier alternative to tobacco smoking, since most of the harmful material produced by the combustion of tobacco in traditional cigarettes is not present in the atomized e-liquid of e-cigarettes, it is a good ideal substitute for cigarettes.

The E-Smart e-cig is a small, slim, light and elegant e-cig, if you think the size of the eGo series e-cigs are too big, the E-Smart is a good choice; It's one of the most innovating clearomizer version too, clear tank tube with scale on the transparent clearomizer:

- 1) Easy to fill the e-liquid. Just take off the inhaler tip, fill the e-liquid, and then screw back the inhaler tip again.
- 2) Suitable size, E-Smart is a small, slim, light and elegant e-cig, the diameter is only 11mm, smaller than the eGo series.
- 3) With scale on the E-Smart clearomizer, you can see how much nicotine you inhaled.
- 4) Longer wicks for more consistent flow of e-liquid to the coil in any position
- 5) No burning, no leaking. Very large vapor.

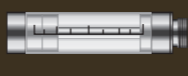
### II. Packaging

An E-Smart e-cig starter kit includes:

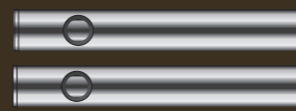
- \* 2 E-Smart tips
- \* 2 E-Smart clearomizers
- \* 2 E-Smart batteries
- \* 1 AC-USB adapter
- \* 1 E-Smart USB charger
- \* 1 10ml E-liquid



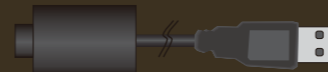
E-Smart tip



E-Smart clearomizer



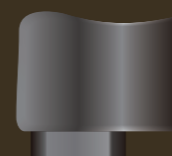
E-Smart battery



E-Smart USB charger



E-liquid 10ml



AC-USB adapter

### Warning:

The E-Smart e-cig is for the adults who smoke, not intended for anyone under the age of 18, pregnant women or people who are not suitable to smoke.

[www.BestE cig.com](http://www.BestE cig.com)

**BestE cig**

Xiamen BestE cig Electronic Technology Co., Ltd.

ADD: No.27 xinmei Rd., 5F, Haicang, Xiamen City, China 361022  
Web: [www.bestecig.com](http://www.bestecig.com)  
E-mail: [info@bestecig.com](mailto:info@bestecig.com)

RoHS CE

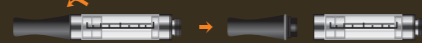
### III. How to use

#### a. How to fill e-liquid to the E-Smart e-cig clearomizer:

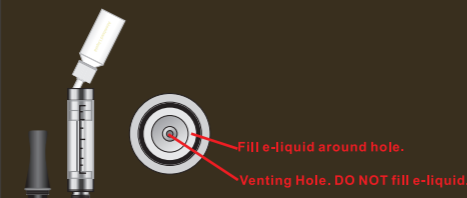
- Step 1: Take out the e-liquid bottle lid;
- Step 2: Cut off the top of bottle;



- Step 3: Unscrew the inhaler tip from the E-Smart clearomizer.

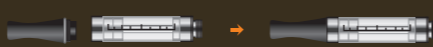


- Step 4: Fill the e-liquid to the clearomizer. Using an e-liquid bottle or syringe, fill the E-Smart clearomizer by inserting e-liquid down the side wall (Do not fill e-liquid in the center hole, that is for air flow).



\* Tips: Please fill the e-liquid slowly, and do not fill completely full of e-liquid, otherwise, it will be leaked into the venting hole.

- Step 5: Screw the inhaler tip back onto the E-Smart clearomizer (do not screw too tightly).



#### b. How to enjoy your E-Smart e-cig:

Screw filled E-Smart clearomizer with the E-Smart battery, they will be stand-by state.

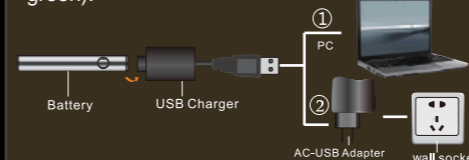


- \* 1. On/OFF: 5-click safety cutoff. The initial state of the battery setting is OFF, click the power button five times within 2 seconds to turn on the battery and five times again to turn off the battery. This is a very convenient option if you typically carry your E-Smart e-cig in your pocket or purse.

2. Working: The E-Smart e-cig works only when you press the E-Smart battery button. Press the button and inhale at the same time. You will feel and taste the vapor gently moving into your mouth. Let the rich vapor collect in your mouth and enjoy the taste. Do not use short strong inhalations.

#### c. How to charge the E-Smart battery:

You just screw the E-Smart battery with the USB charger, then plug it into the PC or AC-USB Adapter. The normal charging time should be kept for 2 hours( even if the LED light turns green).



### IV. Attention:

1. Read the manual carefully, and use this product prescribed manner.
2. Keep the battery away from high temperature environments, store at a normal or low temperature in a dry place.
3. Do not connect the anode and cathode of the battery with metal, this will create a short circuit.
4. Please keep the E-Smart e-cig out of the reach of children.
5. Use this product with the same frequency consistent with the use fo regular cigarettes.
6. Avoid collisions, drops, and other soureces of shock to avoid damaging the product.
7. If you require any repairs, please get the product to a designated local repairman, do not disassemble e-equipment in order to avoid damaging yourself or the product.
8. In case your eyes come into contact with leakage from the battery, do not rub your eye. wash it with clean water as soon as possilbe and contact your physician for help.

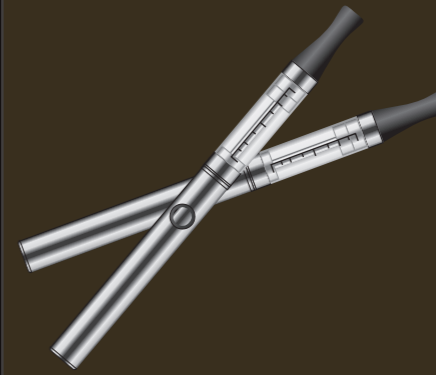
9. In case the atomization liquid comes into contact with your eyes, wash it with clean water as soon as possible and contact your physician for help.
10. if you not planning on using the device for a long time remove the battery.

### V. User Qualification:

1. Suitable users:
  - People with long smoking history, and suffering from uncomfortable feeling.
  - People who work in non-smoking environments but desire to smoking.
  - People determined to quit smoking.

#### 2. Unsuitable users

- Minors under the age of 18.
- People who do not smoke.
- People sensitive to nicotine or any other ingredients in the inhalant.
- Pregnant and breast feeding women.
- People who's doctor forbids them from smoking.



E-SMART E-CIG-BESTECIG\_MANNAL